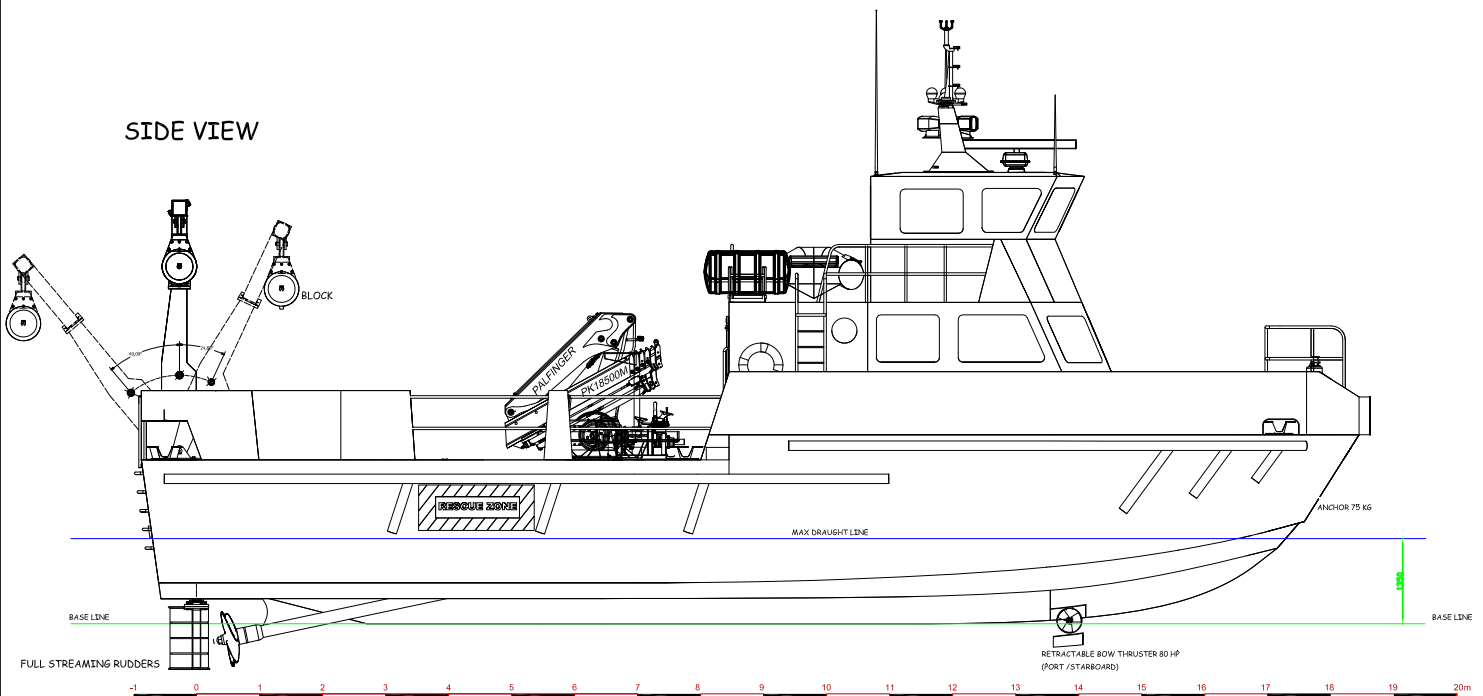
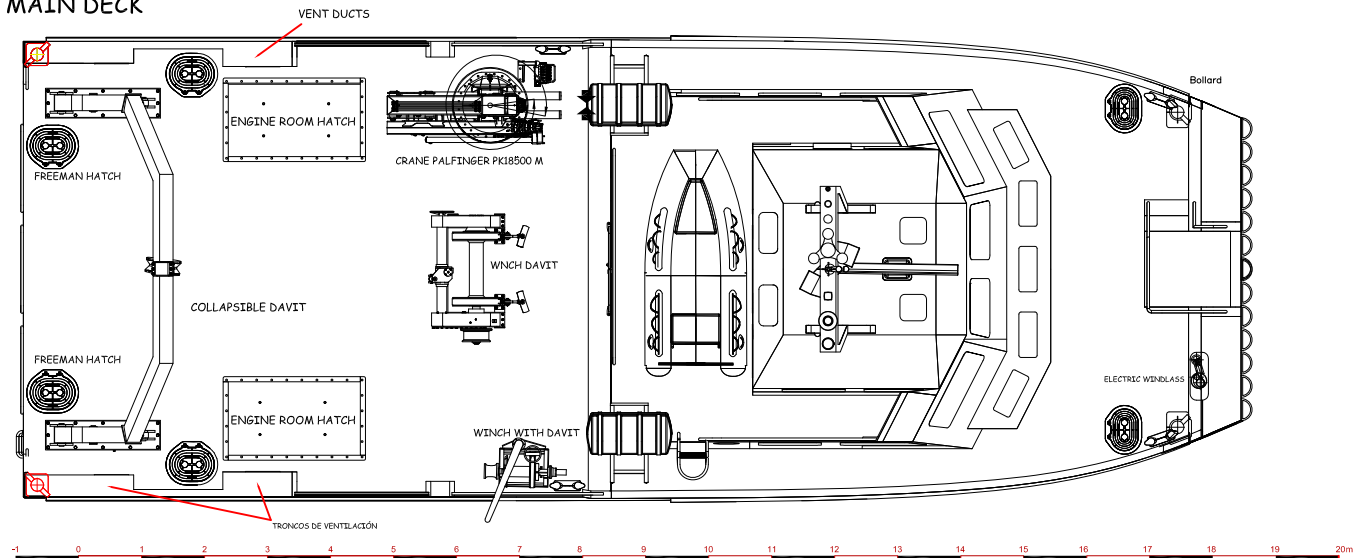


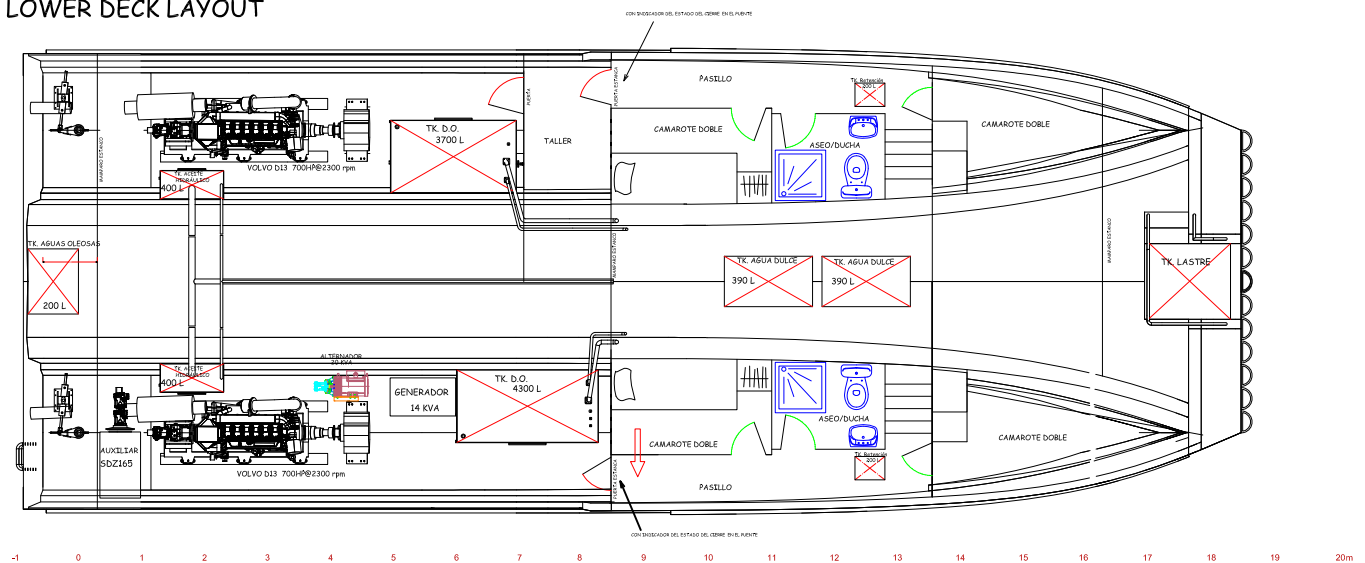
### SIDE VIEW



### MAIN DECK



### LOWER DECK LAYOUT

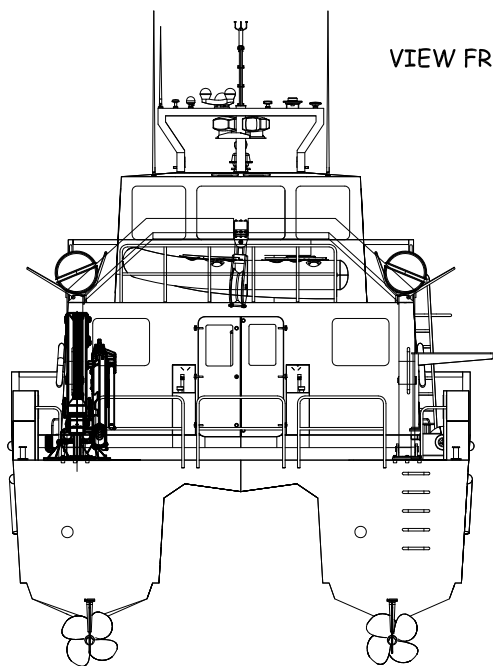


#### MAIN FEATURES

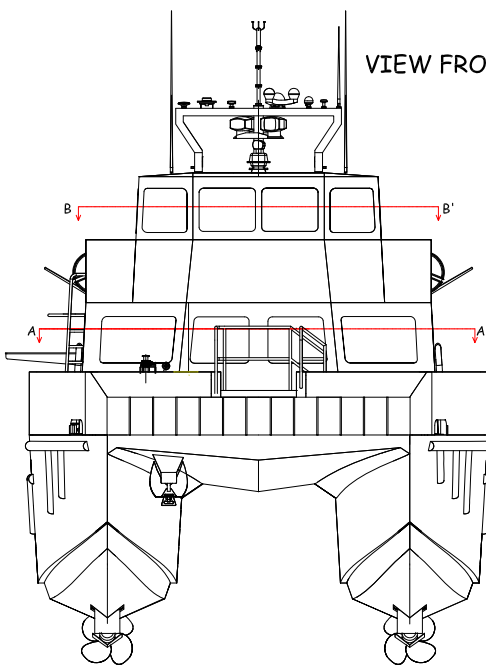
Length overall	19.33 m
Registered length	18.27 m
Length between perpendiculars	18.45 m
Moulded breadth	7.28 m
Max breadth	7.45 m
Construction depth	3.00 m
Registered draught	1.35 m
Displacement at registered draught	72 T
Lightship weight	39 T
Lightship draught	0.90 m
Max displacement	72 T
Max draught	1.35 m

Rev. 1 Drawing creation	Design by JABM 22/04/2013	Drawn by JILB 08/05/2014	Approval by JABM 08/05/2014	Drawing reference	Scale 1:120	Material
<b>Blanchadell</b> Astilleros en aluminio-Mecánica naval				19.33 M OFFSHORE SERVICES CATAMARAN BV CLASS	GENERAL ARRANGEMENT	REV 1 ISO A4

This drawing is the property of Talleres Blanchadell S.L. and must not be reproduced, used or send without written permission

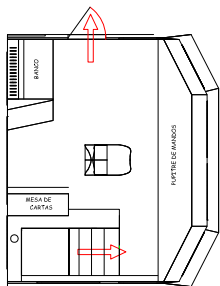


VIEW FROM AFT

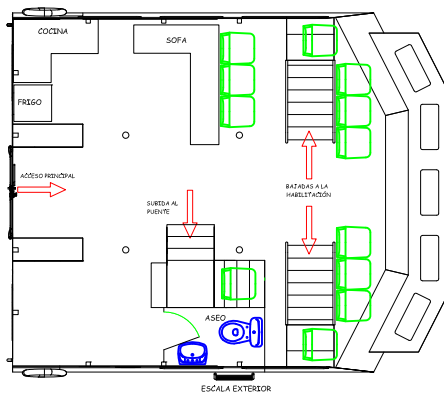


VIEW FROM BOW

B-B' "WHEEL BRIDGE"



A-A' "MAIN DECK CABIN"



**MAIN FEATURES**

Length overall	19.33 m
Registered length	18.27 m
Length between perpendiculars	18.45 m
Moulded breadth	7.28 m
Max breadth	7.45 m
Construction depth	3.00 m
Registered draught	1.35 m
Displacement at registered draught	72 T
Lightship weight	39 T
Lightship draught	0.90 m
Max displacement	72 T
Max draught	1.35 m
Propulsion engines power	2 x 700 mhp /2300 RPM
Engines brand and model	VOLVO PENTA D13-700
Gross Tonnage	69,9 GT
Gross registered tonnes	99,2 GRT
Passengers	3 crew + 12 PAX
Max speed	20 knots
Fuel capacity	8000 L
Hydraulic oil capacity	780 L
Fresh water	800 L
Oily waters	250 L
Sewage waters	400 L
Load capacity on deck	20 T

Rev. 1 Drawing creation	Design by <b>JABM</b> 22/04/2013	Drawn by <b>JJLB</b> 08/03/2014	Approval by <b>JABM</b> 06/03/2014	Drawing reference 19.33 M OFFSHORE SERVICES CATAMARAN BV CLASS	Scale 1:120	Material
			GENERAL ARRANGEMENT			
This drawing is the property of Talleres Blanchadell S.L. and must not be reproduced, used or sended without written permission			REV 1	ISO A4		